



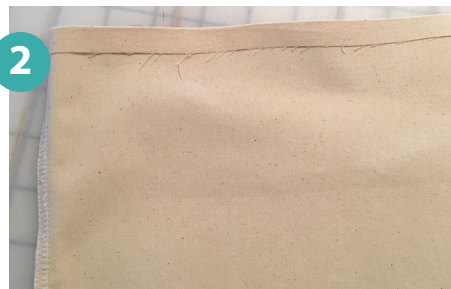
Sew good GOODS

Love the Planet! REUSABALE GROCERY TOTE

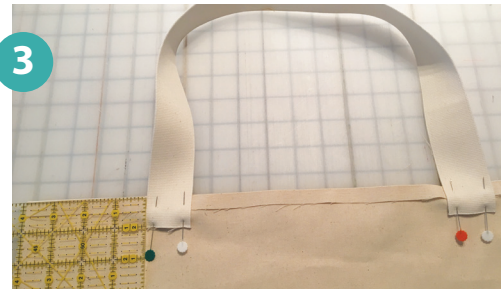
This Kit includes: 1 future tote, sides serged and marked with squares at the bottom, 1 piece of facing (natural or black), 2 straps (natural or black) for tote handles



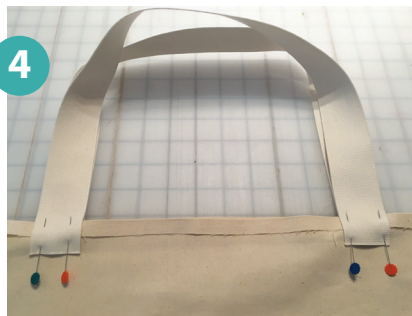
1. Cut out the squares marked at the bottom of the tote.



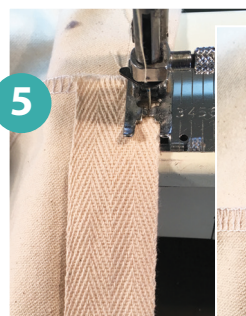
2. Fold over and iron down 1/2 inch around the top of the tote.



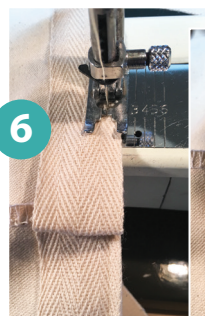
3. Pin the ends of one tote handle 1 inch down from the top of the bag, and 4 inches over from the side seams.



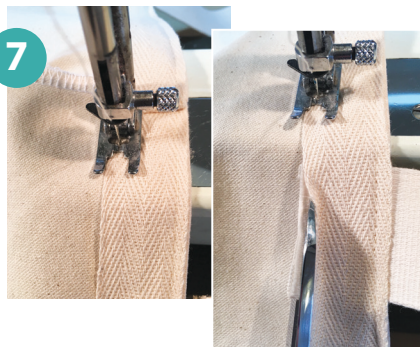
4. Flip the tote over and pin the second handle to the tote, using the handle you already pinned as a guide for placement. You are now ready to add the facing. It will be sewn around the bag, over the straps.



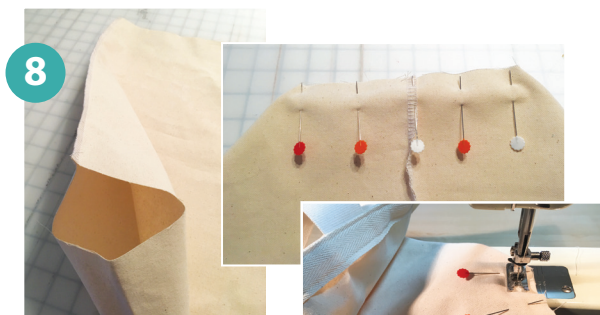
5. Starting at a side seam, stitch the facing to the top of the tote, using a narrow seam. Keep the upper edge of the facing lined up with the turned under edge of the tote. Sew around the top of the tote, stopping about an inch before the starting point.



6. Fold under the remaining facing so the fold is along the edge of the side seam. Continue sewing across the top of the tote and facing to the folded edge. With the sewing machine needle in the fabric, turn the bag 90 degrees and sew down the edge of the fold, to about 1/8 inch from the bottom of the facing.



7. With the sewing machine needle in the fabric, turn the tote again and sew the facing to the tote at the bottom edge of the facing, using a narrow seam. Sew all the way around the tote, trimming the handles flush with the bottom edge of the facing if necessary.



8. Open the tote at the bottom, where one of the squares was cut away. Flatten and pin the edges together, folding the side seam to one side. Stitch or serge across with a 1/2 inch seam allowance. Repeat on the other corner. You have now created a nice, squared-off bottom on the grocery tote!



9. Turn the tote right side out.

Done!
Thank you!
(The planet thanks you, too!)